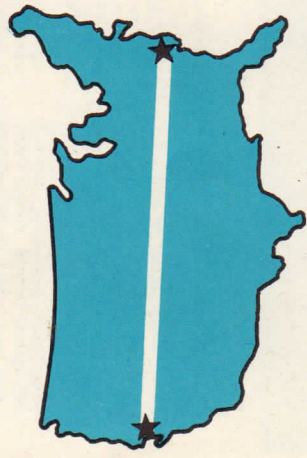


# TRAVEL



TRAVEL "FAMOUS FIFTY"  
TO LEHMAN CAVES

## HIGHWAY 50



is the great central route between the Atlantic and the Pacific, a broad ribbon of asphalt and concrete efficiently linking major travel objectives across the center of the nation. While fast and thoroughly modern, and avoiding the extremes of heat and cold, FAMOUS FIFTY is not an expressway cluttered with trucks where the fight for speed and distance is paramount. Above all, FAMOUS FIFTY is a pleasure route designed for the enjoyment of America and its varied wealth of history and natural grandeur. It starts at one of the Atlantic's most splendid beaches and is appropriately named George Washington Highway through the heart of the historic and scenic East. It passes through the vast and peaceful lands of corn and wheat with groves and gentle streams. It follows part of the Santa Fe Trail and displays the snow-capped crags of the great Rockies. It short-cuts the windings of the Pony Express, the Gold Rush route, and the Lincoln Highway which first spanned the continent for the automobile. It reveals the freedom of Nevada, the grandeur of the Sierras with unforgettable Lake Tahoe, Lake of the Sky, and ends at the fabulous Golden Gate. No one has fully enjoyed America who has not traveled FAMOUS FIFTY.



TRAVEL "FAMOUS FIFTY" TO ROYAL GORGE

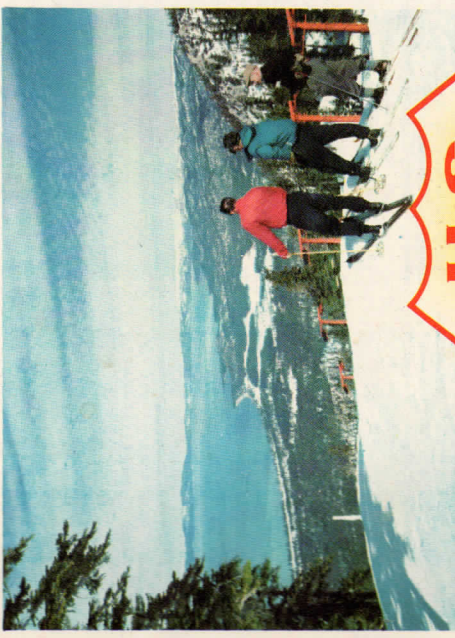


TRAVEL "FAMOUS FIFTY" TO DODGE CITY  
Compliments of—

# FOR PLEASURE



TRAVEL "FAMOUS FIFTY" TO WASHINGTON, D. C.

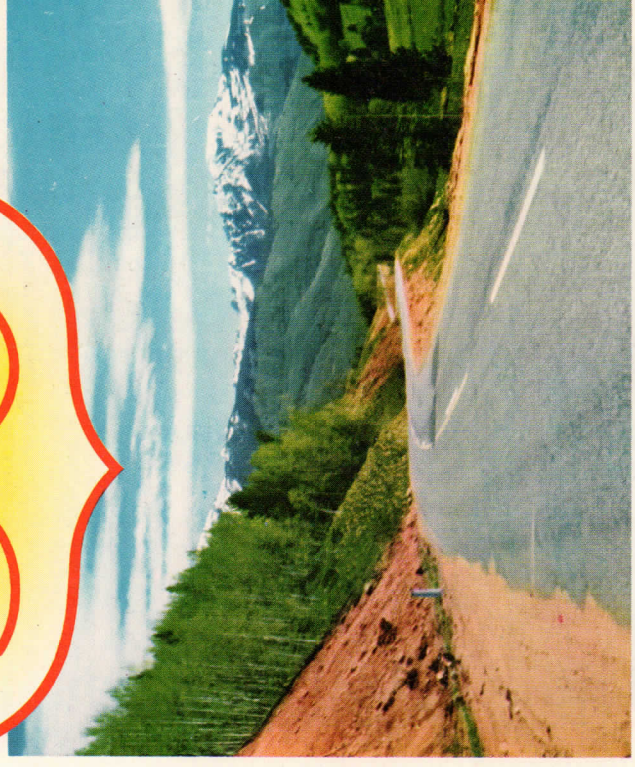


TRAVEL "FAMOUS FIFTY"  
To Heavenly Valley  
Lake Tahoe - South Shore

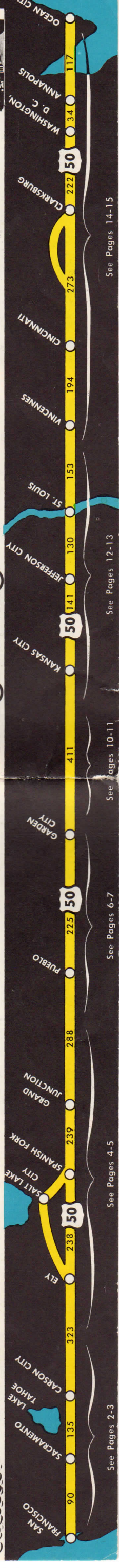


## COAST TO COAST *the central pleasure route*

TRAVEL "FAMOUS FIFTY" TO THE ROCKIES



THE PACIFIC AND SAN FRANCISCO TO  
OCEAN CITY, MD. AND THE ATLANTIC



See Pages 2-3

See Pages 4-5

See Pages 6-7

See Pages 10-11

See Pages 12-13

See Pages 14-15



**CALIFORNIA US 50** displays great variety, from the Pacific and Bay cities to fertile inland valleys, Mother Lode gold country, scenic Sierra Canyons, and beautiful Lake Tahoe.

**SAN FRANCISCO.** Cosmopolitan City of the West and colorful heart of the Bay Region.

**STOCKTON & PORT OF STOCKTON.** "California's Inland Seaport." Sportsman's paradise amidst 1,000 miles of inland waterways. 18 miles from Golden Gate. Visitors welcome.

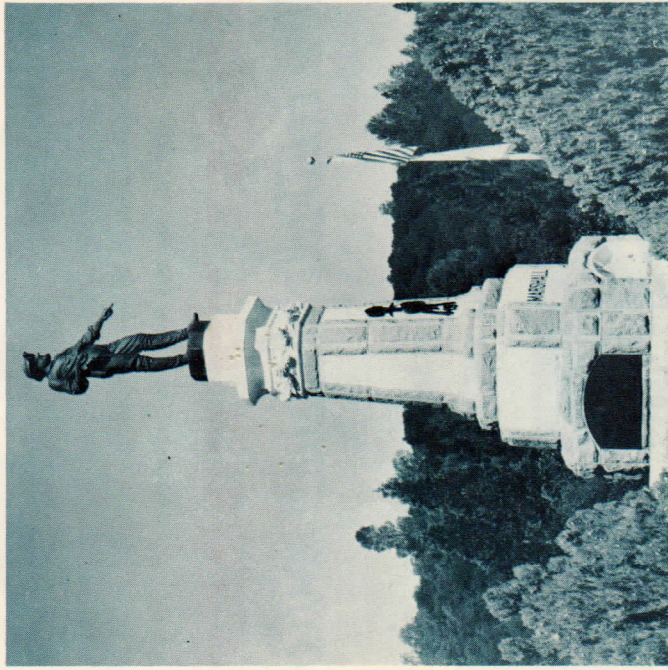
**LODI.** Famous for Grape Festival and National Wine Show. Home of famous Tokay Table Grapes.

**Hotel Lodi.** Air cond., Dining Room, Cocktail Lounge. All modern.

**Del Rancho Motel.** AAA, refrig. air, pool, TV, kitchenettes, room phones.

**PLACERVILLE.** Historic center of California Gold Rush. Fascinating side trip to Gold Discovery Site at Coloma and along Golden Chain Highway "49".

**Mountain Democrat.** "El Dorado Country's oldest newspaper. 107 years. Patterson Motors, Chev., Olds, & Cad. Sales & Serv. AAA, tow serv.



Gold Discovery Monument, near Placerville.

**Murray's Stationery.** Opposite Raifiles. Mural cards, gifts, souvenirs.

**Worrell's Country Market.** One-stop, self-service, meats, groceries.

**El Dorado County Fair.** Stabling facilities, picnic grounds, restrooms. The Cedar Dining Room. Featuring Italian & American food.

**Blair Bros Lumber Co.** A leading name in lumber since 1856.

**Broadway Motel.** 15 modern units. TV, garages, clean and close in.

**Peterson's Gem Shop.** The finest in Jewelry, Gifts and Diamonds.

**PLACERVILLE TO LAKE TAHOE.** via Pollock Pines, Pacific, Kyburz, Tahoe Valley. Route of the fabulous Pony Express via scenic American River Canyon. Beautiful recreational area; hunting, fishing, boating, swimming and skiing.

**B & W Garage at Pollock Pines.** Repairs, towing, flying "A".

**Johnson's Service Center.** Complete auto service. 1400 State St. Phone 4-3891.

**Tahoe Truck Repair.** Sport & Ski Nevada Lumber Co. Ready-Mix concrete, bldg materials, hwy. paint, plumbing and electrical supplies.

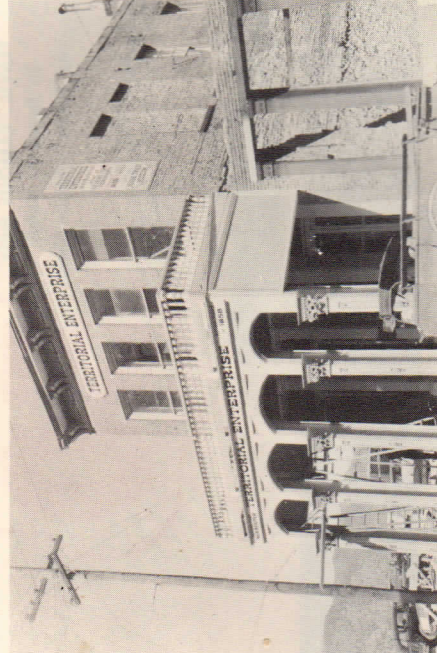
**LAKE TAHOE-SOUTH SHORE.** "The fairest view of the whole earth afords," said Mark Twain, of "The Lake of the Sky." On Highway 50 among Sierra Peaks, Lake Tahoe is now year round playground of the West, visited annually by thousands from all over the world.

**Lake Tahoe Realty, Earle Pankost.** Bijou, Box 27, Ph. KI 4-3891.

**Lawrence's Dept. Store.** Apparel & shoes for entire family. Home suppl. Armstrong Realty Co., Bijou. Every Rel Estate need filled.

**Longshore-Stateline Lodge.** 1 block off Hwy. Deluxe accom. & studio apts. Pvt. beach. S. Tahoe. KI 4-3340.

**La Baer Motel.** 32 mod. units, studio apts, private beach, boat ramp. One-half block from Harrah's.



Historic Newspaper Building, Virginia City.

**Shuck Chan Restaurant.** Variety of fine Chinese foods. Downtown.

**El Dorado Dist. Co. Burgermeister, Miller's High Life.**

**Blue Bell Coffee Shop.** Approved AAA, air cond., downtown.

**Hangtown Studio.** Processing, film, Portrait & Commercial Photography. The Tire Exchange. New tires, recapping service and batteries.

**Fairview Motor Lodge, AAA,** ultra modern, air conditioned, TV.

**PLACERVILLE TO LAKE TAHOE.** via Pollock Pines, Pacific, Kyburz, Tahoe Valley. Route of the fabulous Pony Express via scenic American River Canyon. Beautiful recreational area; hunting, fishing, boating, swimming and skiing.

**Nevada-Sierra Realty.** Open all year. Tahoe Valley and Al Tahoe. Kyburz Resort. Garage, towing, P.O., Store, Bar, Dining, Camping.

**Strawberry Lodge at Kyburz.** Dip-in, pool, lounge, pool, hunt, fish. Tamarack Pines Lodge at Twin Bridges. Restaurant, bar, tennis, gas station, complete tourist facilities.

**LAKE TAHOE-SOUTH SHORE.** "The fairest view of the whole earth afords," said Mark Twain, of "The Lake of the Sky." On Highway 50 among Sierra Peaks, Lake Tahoe is now year round playground of the West, visited annually by thousands from all over the world.

**Blue Crystal Motel.** 400 ft. from Stateline. Adj. to beach area.

**Stateline Auto Service.** Auto repairing and complete parts house.

**Playland Motel.** 26 mod. heated units and pool. Continental B'fast. Brooke's Lodge, Stateline, AAA, Diner's Club, spacious, pool, coffee service.

**La Baer Motel.** 32 mod. units, studio apts, private beach, boat ramp. One-half block from Harrah's.

**NEVADA US 50** is the pleasure way across the State, Lake Tahoe to Lehman Caves. Cool and relaxing, it has many scenic and historic points. Convenient access to Reno and the historic Virginia City. Route follows Pony Express Trail.

**Harvey's Wagon Wheel at State Line.** Casino, Cafe, Sage Dining Room. 3 bars, open 24 hrs.

**HARRAH'S CLUB and Harrah's Stateline Country Club** flank both sides of US 50 at Nevada boundary, featuring biggest names in U. S. show world. Open 24 hours. Three restaurants to serve you.

**CARSON CITY.** Smallest Capitol in the United States. Eastern gateway to Lake Tahoe.

**Frontier Motel.** 21 mod. units, with air without tire pens, tubs & showers. Joe Gorelli Pontiac Sales. Willys Jeep Service. Chevrolet, GMC, Buick. The Pine Cone "in the middle of the road." Silver Springs, open 24 hours. Not recommended by Duncan Hines.

**Cash Mercantile Store.** Carson City's largest leading department store.

**VIRGINIA CITY.** Famed gold and silver mines. "World's Liveliest Ghost Town." Not a restoration, but original Wild West as it was in the 1870's. Board sidewalks, frontier saloons, old time hotels and restaurants still operating.

**The Elley-Orrum.** House of Sparkle. Exotic & beautiful gifts, antiques, modern jewelry, China & glassware. Original "BUCKET OF BLOOD" SALOON. World fam. Since 1876.

**SILVER SPRINGS.** Newly born town, offers water skiing, miles of sandy beach, general playground, close to everything. Four highways.

**M. S. Peck, president of Nevada Highway 50 Assn.** Real Estate, Goods, finest food, mixed drinks. Silver Springs Service. Chevron products, bar, lounge, excellent food.

**Silver Springs Cafe & Bar.** Bestest foods and drinks. Package Goods.



Hamilton (Ghost Town), once home of 30,000 people.

**FALLON.** 360 days of sunshine every year; the true oasis of Nevada's desert. Hunting, fishing, boating, swimming. Unexcelled farm land surrounding a bustling, modern county seat.

**Anderson Ford-Mercury, Inc.** 50 East Center St. Phone HA 3-1122.

**Western Motel & Hotel.** Mod., air cond., convenient, downtown.

**Horseshoe Club & Cafe.** Bar, gaming and lots of liberal slots.

**Roadside Inn.** 1 mile W. on 50. Cocktails, dining, dancing, gaming. Smoky Flippin's Bank Club, Bar, Casino, excellent food. Open 24 hrs. Palace Club & Cafe. Fine food all ways, bar, gaming, liberal slots.

**Grand Central Texaco Service.** We guarantee fast, dependable service.

**Lariat Motel.** 18 mod. units, rugs, air cond. Best Western, AAA. Stewart Pontiac, Buick, GMC Sales. Towing, expert repairs. Phone 3-882.

**Uptown Motel.** All mod. units, air cond., shrs, tubs, radios on req., TV lounge.

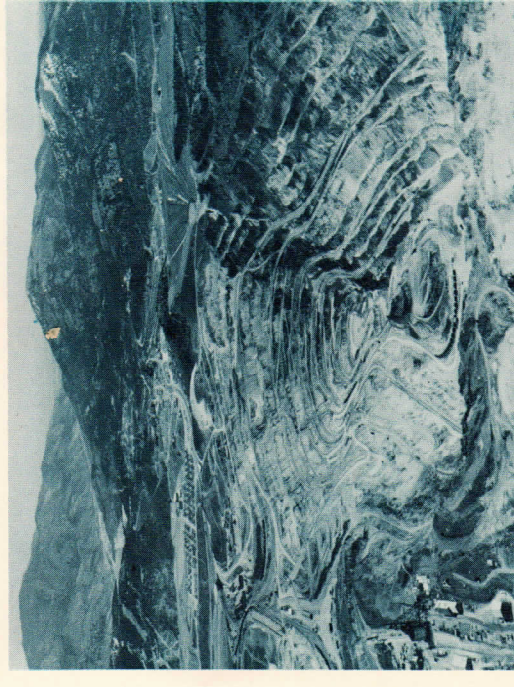
**AUSTIN.** Old Silver Town, Historic Buildings and Relics.

**Roy's Texaco Service.** Fast, courteous. Emergency repairs. Soft drinks.

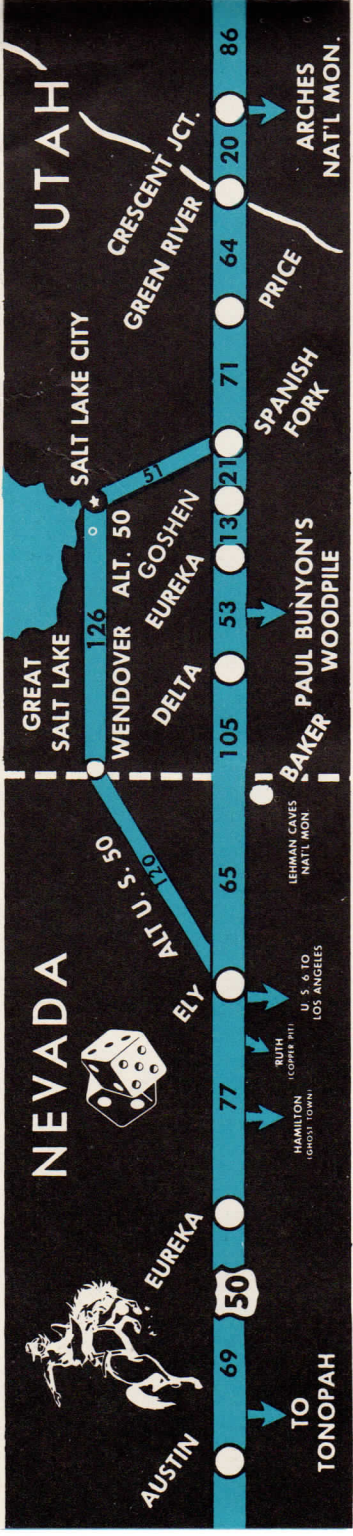
**Pony Canyon Motel.** Chevron Station. Trailer Court, modern, reasonable rates, courteous service.

**JUNCTION HIGHWAYS 50 & 8A** — South to Tonopah, West to Austin, Carson City & South Lake Tahoe.

**Frontier Motel, Cafe & Service Station.** Fast, courteous, 24 hours.



Spectacular Ruth Copper Pit, near Ely.

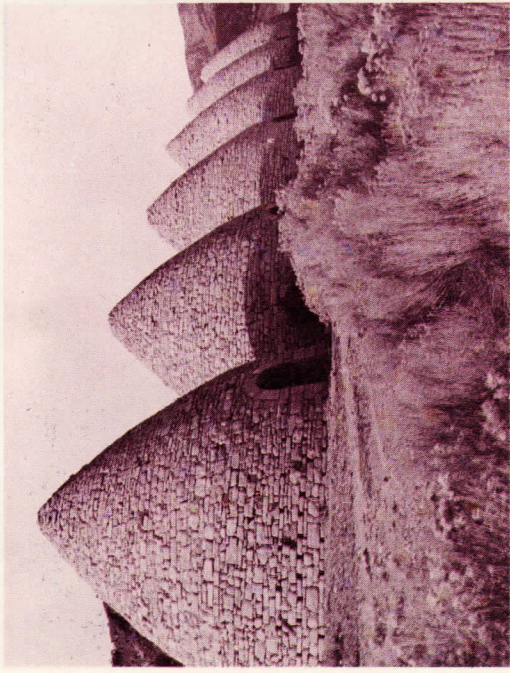


**EUREKA.** Mining and ranching center. Lead-silver reserves still great. Once controlled world's lead markets. Historic Buildings and fire equipment still on display.

**RICHMOND AUTO COURT.** Individual units, reasonable. rates. Ph. 9411. Hererra's Service. Union 76 prods. Towing, expert repairs, soft drinks. Hotel Brown. Old Jackson House - 1876. Old ext., mod. interior. Sm. heat, bar.

**Ely.** Mining, ranching, and vacation center of Eastern Nevada. Great Ruth Copper Pit. Fishing, skiing and camp grounds. Ghost Towns and Historic Landmarks. Garnets. Popular travel stop. Casinos and Night Spots. Golf and swimming. Near Lehman Caves National Monument.

**HAWKINS SUPER SERVICE.** Mobil prods. Close to Junction 50-93-6. Bank Club. Cafe, Dining Room, good food. Bar, Casino, liberal slots, free Bingo, Cocktail Lounge. Free entertainment. Where the Customer is King. Liquor & Gift Shop. Largest display gifts on US 50. Station Mobil Stop & Rest at the Pentone Drug Rexall Store. Fountain, gifts, camera supplies, magazines. Close in, sensible rates. Walker Auto & Home Supply. Texaco & Goodrich prods. LP Gas. Soller's Union "76". Fast, court. serv. Conoco, Gulf, BA cred. cards. Hilltop Courts. 40 modern units. Garage accom. Ph. AM 4-4439.



Ward Charcoal Ovens State Park.

**UTAH US 50** is now same route as US 6, using new highway which saves 52 miles and avoids heavy commercial traffic.

**DELTA, UTAH.** Fine motels, complete shopping center. Alfalfa hay and seed. Large producer of alfalfa Blossom Pure Honey. Close to Topaz Mountain.

**KILLPACK'S MOTOR LODGE.** AAA, 14 mod. units, central loc. Ph. 4402. Service Cleaners & Laundry. Sta-Nu Process. Hamburg. & Footloings.

**EUREKA, UTAH.** Tintic Mining District produced \$365 million. Ghost towns nearby. Paul Bunyan's Woodpile. Skyline Drive.

**EUREKA, AUTO SERVICE.** Conoco Gig's Place & Cafe. Complete products. S&H Green Stamps. Menu. Cent. town. Open 7 days. Randle's Utoeco Service. Two convenient locations. Auto Service.

**GOSHEN, HOTEL & CAFE AT GOSHEN.** Complete menu, mod. (1958), air cond. units, reasonable rates.

**SPANISH FORK.** Livestock Center of Utah, situated in the Utah Valley. Bounded on the east by the beautiful Wasatch Mountains and Utah Lake on the west. Central Utah Projects. Excellent schools, churches, recreation areas and shopping centers.

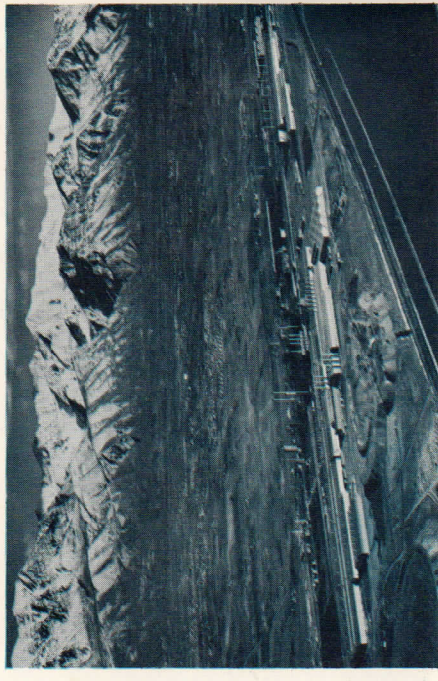
**IDEAL HOTEL & CAFE.** Fine food, clean. Choice steaks and fryers.

**ORSON BROWN CHEVROLET.** Complete service, 24 hrs., wrecker. Ph. 250. Payson, Eureka and Delta.

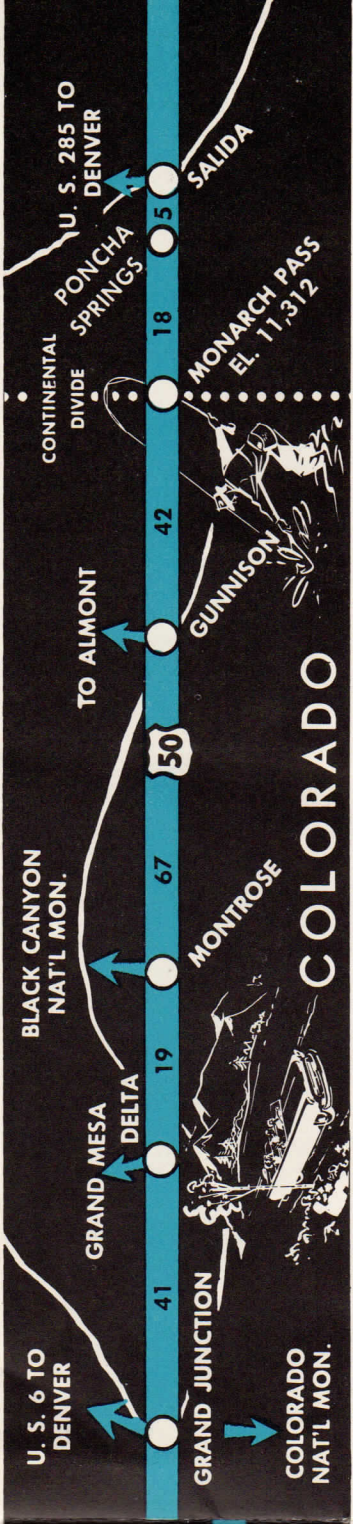
**PRICE.** Gateway to and center of Eastern Utah, rich in economic wealth and scenic attractions. Cosmopolitan and metropolitan, largest city in Eastern Utah.

**BARNEY'S PHOTO SHOP.** Everything photographic. Adj. to Price Theatre Bldg.

**GREEN RIVER.** "Land of the Sleeping Rainbow." Sports, scenery and interests galore. Pleasure boating headquarters. Starting point of the scenic and thrill-packed 196-mile "Canyon Country River Marathon" each June. Also Arches Monument, Bridges, Goblin Valley, Capitol Reef and Dead Horse Point.



U. S. Steel's Geneva Works, 17 miles north of Spanish Fork.



**MIDLAND HOTEL.** Steam heat, clean, comfortable and reasonable. Arctic Circle. Fish, courteous service. Inverness. Fish, courteous service. Halls. Chevron Service. Standard Prods. 24 hrs. Center of town. Sedy's Texaco Service. Fast, courteous, personal service. Oasis Motel & Cafe. Centrally located, courteous, good food. Dick's Bay "One Stop" Service. Gas, food, bar. All credit cards honored.

**GRAND JUNCTION.** Grand Mesa, world's largest flat top mountain; Colorado National Monument, scenic grandeur. Western Colorado's largest city — excellent accommodations, shopping center, agriculture, mining, and transportation hub. "Uranium Capital of the U. S."

**SERVESON OIL CO.** welcomes you to Grand Junction for Mobil Dealers. Uranium Motel & Cafe. Artesian water, hunting, fishing, mining info. Bar. Dine & dance in Flame Room. Gay Johnson Automotive Service. Cafe, free coffee. Gr. June, Delta, Montrose.



Black Canyon of the Gunnison — National Monument.

**DELTA, COLO.** Hub City of scenic Western Colorado. Founded April 6, 1882. Derived name from Greek letter "D" or Delta because of shape of site. Near 10,000 ft. Grand Mesa, fishing, hunting, camping, scenic wonders. Gay Johnson Super Service. Chevron, Gates & Dayton Tires. Open 24 hours.

**MONTROSE.** Located at Junction of US 550 South and US 50. Center of great agriculture and ranching area. Black Canyon National Monument, deepest gorge in Colorado carved out of black granite. Narrow gauge locomotive and caboose on 50 North. The nation's only Ute Indian Museum. New modern heated swimming pool. Trout fishing and big game hunters' paradise.

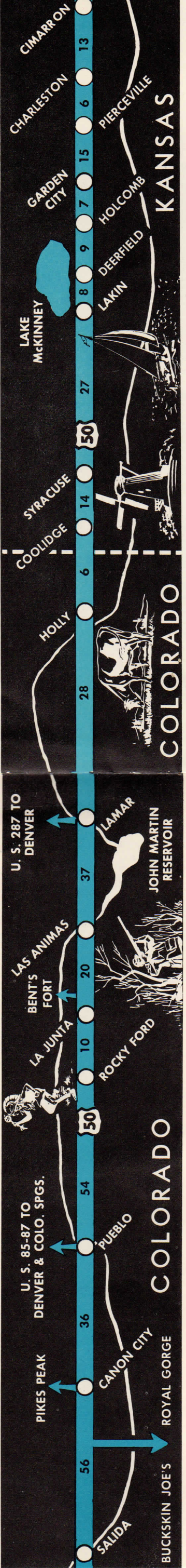
**THE LATHROP HDWE. CO.** Sporting goods, hunting & fishing licenses. King's Texaco Service. Fast courteous service on Highway 50 west. Chief Motel, 50 W. S/kitchenettes. TV, air cond., automatic heating, individual thermostats. Chipeta Lounge & Cafe. Finest food and mixed drinks. Relax and enjoy. 5500 mt. off 50. Mod. TV lounge. Coffey Crown Service. Distrib. US Royal Tires. Batteries & Accs. Smith's Firestone Dir. Store. Home & auto supplies. Tires, batteries, etc. Beach Standard Service. Gas, oil, tires, lub. Credit Cards accepted. Wacker's Phillips "66". Major and minor auto repairs. S&H Stamps. Belvedere Hotel. Montrose's leading Hotel. "Come as you are." Parking. F. Earl Hixson. Texaco Consignee. Tour with Texaco. Hartman Brothers. Serving the Colorado motorist since 1904.

**RAY REYNOLDS FORD DEALER.** Sales & Service. Parts, Chevrolet prods., S&H Stamps.

**GUNNISON.** Recreation unlimited. 1,200 miles of open trout streams. Lakes of all sizes. Hunting, golf, swimming and prospecting. Relief from hay fever and asthma. No harmful snakes or insects. Sun shines every day. Unlimited mountain scenic attractions.

**WILDWOOD MOTEL & TRAILER PARK.** Mod., kitchenettes, quiet, shady, play area. Western State College, located in Gunnison. Fully accredited liberal arts college offering B.A. & M.A. degrees and leading officers of Advanced Study. Erdner's, Blg. materials. Hdwe. sport goods & curios. N. of Safeway. First Nat'l Bank. 78 yrs. of service to the climate capital of the U. S. Fleetwood's Rexall Drugs. Prescription pharmacists, fountain, cosmetics. Spencer & Hill. Texaco prods., Sales & Service. Goodrich Tires & Accs. Goad's Fine Foods & Cocktail Lg. New, modern. Really "good" coffee.

**MONARCH PASS.** Continental Divide, 11,312 ft. Observatory, scenic bus trips, breakfast, lunch, dinner. Gifts for entire family, all in one stop atop Monarch Pass. Midway Station Cafe at Garfield. Post Office, gifts, good food.



**PONCHA SPRINGS.**

Poncha Springs Lodge, Motel & Cafe.  
**SALIDA.** East gateway to Colorado's All Weather Pass. Host to both U. S. & foreign contestants in the famous 26-mile boat races held on the Arkansas River each June. Famous for its history, scenic attractions, climate, hunting, fishing, skiing and Hot Springs swimming pool and baths. Tenderfoot Drive spiraling around Tenderfoot Mountain to the lookout above.

Colorado Lodge. Recommended by AAA, Best Western. Compl. men's store. Nationally advertised brands. Motel Westerner. 12 mod. catered rooms, 1 blk. west City Pool. Rainbow Motel & Cafe. All mod. units, free TV, American Express Credit Cards.  
 Y&R Auto. Co. Chrysler, Plymouth, Dodge, Oldsmobile, Buick, Ford, GM. Free delivery, pickup, service. Salida. Drug. Truckers' Pharmacy. Salida Realty Co. specializing in Ranches, Sub. Home City Prop. Shelly Motor Inn. Cafe, Dining Room. Steaks, Chicken and Fish Baker Motel, AMHA & Travelers Best Members, Hwy. 50 E. Kitchenettes, pets allowed. Keystone 946674.

**CANON CITY.** Royal Gorge, and World's Highest Suspension Bridge. Tours through Colorado State Penitentiary. Free Municipal Museum. Annual May Blossom Festival. Year-round trout fishing in Arkansas River. One hour drive to foot of Pike's Peak.  
**Mountain View Motel.** Large mod. air cond. S/kitchenettes. E. on US 50.  
**The Royal Gorge,** aptly described as "America's Most Sensational Scenery," 4 miles (on all paved highway) off US 50. Spanning the Royal Gorge is the World's Highest Suspension Bridge and Incline Railway to the River and Railroad at the bottom.



Buckskin Joe's, near Canon City.

**PUEBLO.**

It's Motel. Largest AAA air cond., TV, phones. "Rocker Dining Room" of C. "Coke" Ph. 1450.  
 Buckskin Joe & Royal Gorge Scenic R.R. Auth. 1860 Gold Rush Town. Orig. log buildings, moved here and reassembled into complete town of over 18 bldgs. Spectacular 2 1/2-mile miniature R. R.  
**Dr. Marion E. Potter.** Chiropractor. Health while traveling. Ph. 145-W.

**PUEBLO.** Home of Colorado State Fair. Daily tours of the largest steel plant west of the Mississippi. Beautiful parks and scenic drives in nearby San Isabel National Forest. Professional baseball, dog races, auto racing and rodeos.  
**Rambler Motel.** Best Western. AAA. 1/2 mile north of 50 on 85-87.  
**Chi Ann Motel.** 28 mod. units, TV, phones, tile showers. Family rate.  
**Clev-A-Motel.** Mod., quiet, kitchenettes, family rates. Phone 2-0970.

**ROCKY FORD.** Named for historic ford on the Arkansas River. Home of world-famous Watermelon Day. Municipal swimming pool, recreation and rest area.  
**LA JUNTA.** On the Santa Fe Trail. Home of Famous Koshare Indian Dancers, Kiva and Museum. Site of Historical Bent's Old Fort. Museum of Guns and Indian Artifacts, Horace Greeley Stagecoach. Silver State Court, 15 mod. air cond. units, 3 bks. Bus. Dist. Ph. 156.  
**La Junta Motel.** 14 mod. units, air cond., TV, kitchens, shady. Ph. 941.  
**Western Gas & Oil, Shamrock Gas, Goodyear tires, tourist information, Phillip's Restaurant, Koshare interior design. Fine food, Chicken spec. El Otero Hotel, Coffee Shop and Lounge. Streaks a specialty. Cocktail Lounge.  
 Cactus Court. 13 mod. units, TV, Lounge, phones in rooms, Ph. 358.**

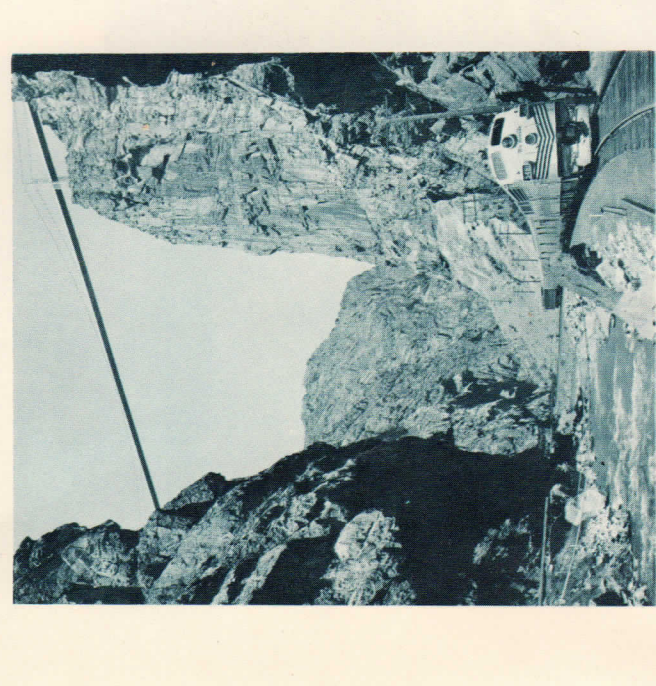


Lake Irwin, near Gunnison.

**LAS ANIMAS.**

Where Kit Carson lived and died. Cattlemen's State Museum and Park one mile south, where Kit was buried. John Martin Dam and Fort Lyon VA Hospital. Picnic tables on shady court-house lawn, new swimming pool.  
**Central Cafe.** Good wholesome food at reasonable prices. Mod., air conditioned.  
**George & Lillie Hayter, props.** Main Cafe. Famous for fine food. Choice steaks, air conditioned.  
**Palace Hotel.** Coffee Shop, Dining Room, Lounge, air cond., soft water.

**LAMAR.** On the Historic Santa Fe Trail. Madonna of Trail Statue commemorating the Big Timbers Area. Goose hunting capital, petrified wood and oyster bed areas, Indian writings and battle grounds. 33-acre City Park, golf course, Chamber of Commerce located in heart of city on US 50 & 287 - 17 S. Main.  
**ElDonna Motel.** Brand new, indiv. air cond. and heat. Phones & TV. Guaranty Abstract Co. Abstracts & Insurance. "We're proud to live in CAVI land."  
**Harold's Court & Texaco Service.** 21 air cond. units, North on 50.  
**Peery Electric, Mark IV auto, air cond., Sales & Service.** Ph. 216.  
**Frank A. Dougherty Plumbing & Heating.** No job too big or too small. units, Spacious, quiet. Phone 904.



World's Highest Bridge over the Royal Gorge.

**HOLLY.**

Had's Holly Pharmacy. Refrig. air cond., Cameras, Camera Supplies. Merrifield Texaco Distributor. 3 mod. units, air cond., TV, phone. Ph. 129-187, 117-W.  
**Time Holly Chiropractic.** Treats the tourist to step awhile in Holly.

**KANSAS US 50** traverses historic country of great interest, with many natural attractions and pleasant stopping places. The Santa Fe Trail in Kansas (Dodge City and Cimarron) played a fascinating part in American history. Beginning around 1700 the Trail was used extensively for trading, though subject to Indian hostility and other hazards.

**SYRACUSE.** Perkins Zoo, tremendous collection of small animals, birds, world's largest collection of squirrels. New State Roadside Park 3 blocks south of town. Shopping facilities with small town friendliness and convenience. Gas stations, restaurants open 24 hours. New modern schools. New modern swimming pool.  
**Joe's Standard Service, Brake and generator work, other minor repairs. Hi's Court & Grocery.** Every day 6 a.m.-9 p.m. Open Sun. & Holidays.  
**Rudy & Irion Oil Co. Phillips '66'** products. Truck and Cafe Stop.  
**Kirby's Western Auto.** Car accessories, sport goods, appliances, licenses. Dougherty's Rexall Drugs, Fountain. Most colorful corner in Kansas.  
**Dres Martens & Montgomery, Real-Tone, Inc. Oil & Gas Sales. First Nat'l Bank.** Stay in Syracuse where cool summer nights begin.  
**Perkins Park Zoological Gardens.** See historic Sod House and authentic Dutch Mill. Exotic bird collection.

**GARDEN CITY, KAN.** Wide streets, modern stores, trees and lawns. 1,266 Hotel and Motel Units. Kansas' largest Zoo and Buffalo Herd, world's largest free municipal concrete swimming pool, Famous Finnapark. Agriculture, natural gas region, potential oil development.  
**Ve Dor Cafe - Delicious!** Foremost for fine food and friendliness.  
**Windsor Hotel.** Air cooled, mod. conveniences, 1886 Hist. Landmark.  
**Co-op Equity Exchange.** Home of world's largest country grain elevator.  
**Hotel Warren & Trail Room.** Air cond., Better rooms & food. Sleep in Safety. Children free.  
**The "Elite" Cafe.** Where you get what you like and like what you get.

**CIMARRON.** Site of the Famous Cimarron Crossing of the Santa Fe Trail.  
**First Nat'l Bank of Cimarron.** Famous Cimarron Crossing Park.  
**Western Cafe.** Air cond. Where Cowboys eat chuckwagon style.  
 Clark's Drugs. Air cond., fountain service. Prescription Druggist.  
 Russ' Service. Mobil prod. Open 24 hrs. from June 1 to Sept. 1.

**PIERCEVILLE.**

Pioneer Barber Shop. 72 yrs. same address. Oldest shop in Colorado. Free coffee. Dayton tires. Ph. 695.  
**El Mar Restaurant.** Approved by Duncan Hines. Meals you'd be proud to serve yourself.  
**Lynam's "66"** Service. 6 to 10. Fast & court. service. Welcome to Lamar.  
**Maxwell House Hotel.** 50 air cond. rooms, Coffee Shop, Lounge, AAA.

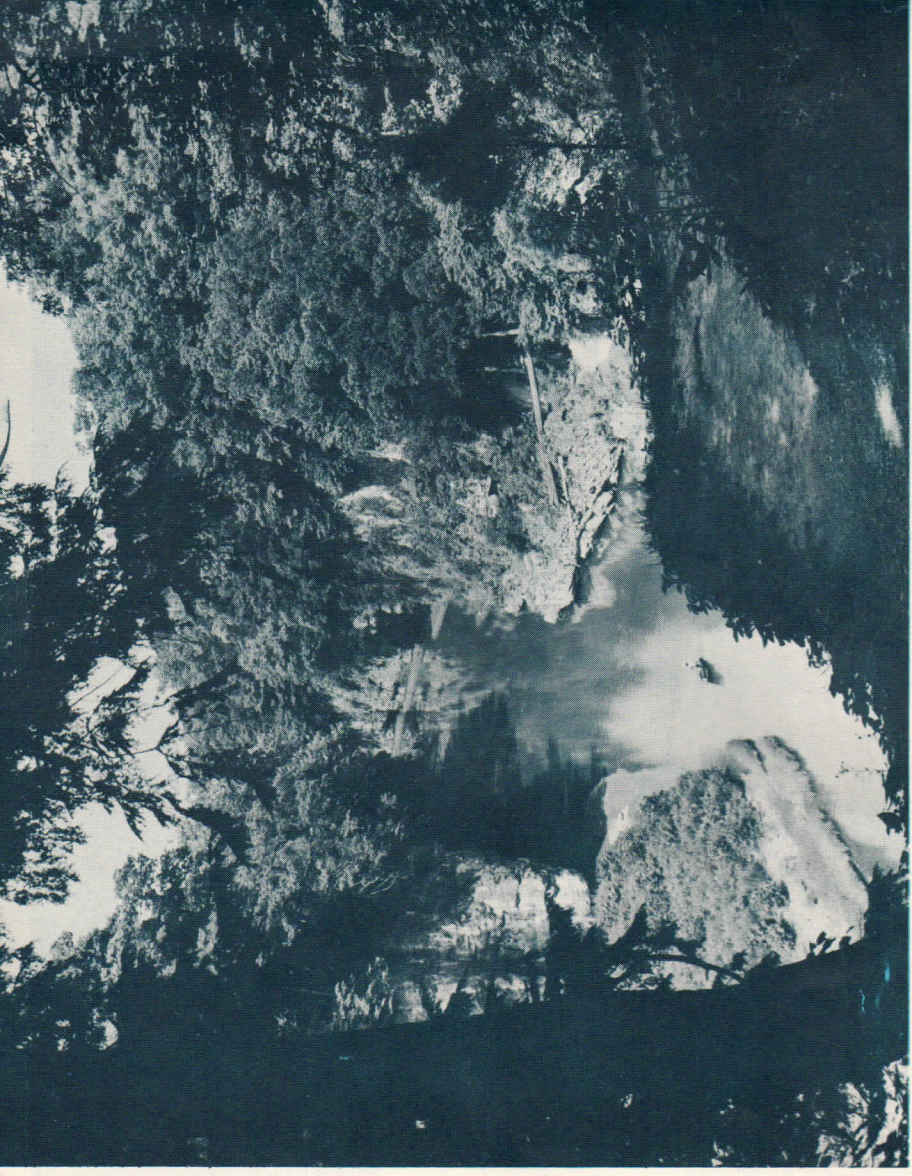
**HOLLY.** 4 miles from Kansas state line on Arkansas River.  
**Donohoe Motor Co.** Chevrolet.  
**Merrifield Texaco Distributor.** 3 mod. units, air cond., TV, phone.  
**L-M Drugs.** All sorts of things for the traveler.

**VALLEY STATE BANK, F.D.I.C.** Over half century dependable service. Hotel Ames, Air cond., Co. Shop. Family rates. 1 blk. north on 50.  
**Uptown Motel & Cafe.** 24 hr. serv. ve. Air cond., TV, phone.  
**Motel Grand.** 21 mod. units, air cond., Rest Room.  
**Shamrock Truck Stop & Cafe.** Open 24 hrs. West of town on 50.  
**Henry's Conoco Service.** Conoco products. On call 24 hrs.  
**Daniels Complete Service.** Standard prods. Repair cars and trucks.

**See historic Sod House and authentic Dutch Mill.** Exotic bird collection.  
**WIDE STREETS, MODERN STORES, TREES AND LAWNS.** 1,266 Hotel and Motel Units. Kansas' largest Zoo and Buffalo Herd, world's largest free municipal concrete swimming pool, Famous Finnapark. Agriculture, natural gas region, potential oil development.  
**Lucas & Son Standard Station, Jct. 50-156-83.** Fast and efficient service.  
**McClung & Payne Pharmacy.** Gifts, fountain. Compl. photo equipment.  
**Downing's.** An Oasis in Kansas. Fine foods for your dining pleasure.  
**Trail Inn Motel.** 50 air cond. units. Children's playground. On US 50.

**Clark's Drugs.** Air cond., fountain service. Prescription Druggist.  
**Russ' Service.** Mobil prod. Open 24 hrs. from June 1 to Sept. 1.  
 Cowboys eat chuckwagon style.

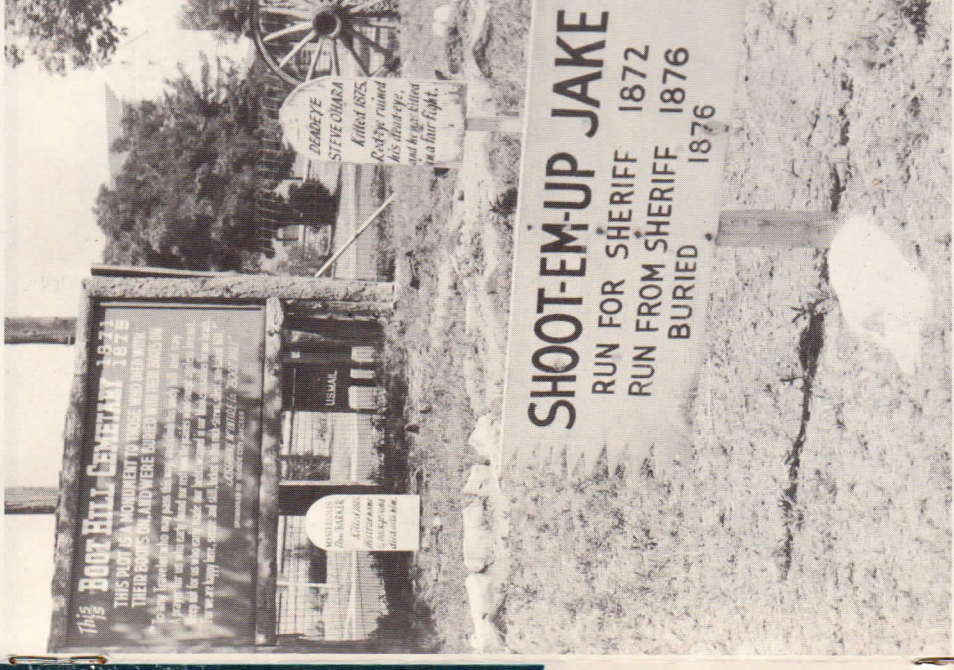
# Hi-lites on Famous Fifty



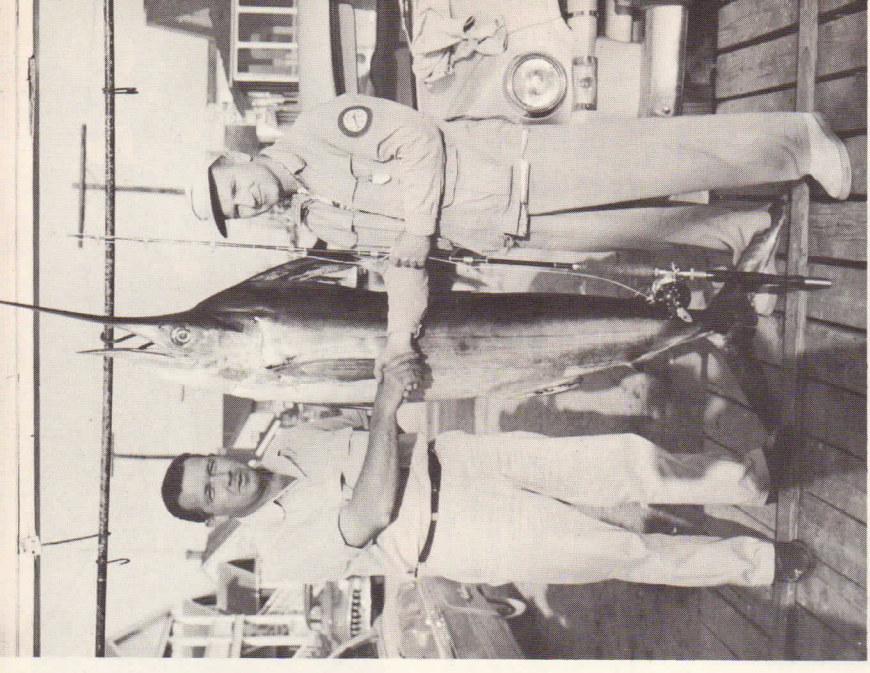
Rocky Fork Gorge, near Bainbridge, Ohio.



Blennerhassett Island in Ohio River at Belpre, Ohio.  
U. S. 50 Divided Highway is at left in picture.



Boot Hill Cemetery in Dodge City.




Marlin caught at Ocean City, Maryland




Monarch Pass at Continental Divide, Colorado.

**CIMARRON** 6 **DODGE CITY** 10 **SPEARVILLE** 12 **OFFERLE** 8 **KINSLEY** 9 **LEWIS** 10 **BELPRE** 10 **50** 12 **8** **7** **5** **33** **SYLVIA** **ZENITH** **STAFFORD** **ST. JOHN** **MACKSVILLE** **KANSAS**



**FT. DODGE**



**DODGE CITY** — World Famous Boot Hill and Front Street. Home of Gunsmoke, Wyatt Earp, Bat Masterson, Doc Holiday and Many Others. All Free. Visit famous Long Branch Saloon and Front Street on Boot Hill. See BEESON MUSEUM. Over 6,000 authentic Dodge City relics, including the shotgun that started Wyatt Earp on his career as a Marshal.

**Bushells '66'** Service. Crushed ice. On 30 East of Town.

**First National Bank.** See Old Dodge City's Boot Hill on Front Street.

**Cowboy Capitol Museum.** Free. See western relics, horseless carriages, etc.

**Ideal Laundry.** — Says don't miss seeing Boot Hill.

**Pepsi-Cola Seven-Up Bottling Co.** Stop for a cold Pepsi or 7-up.



Big Game Hunting on Famous 50.

**Royal Motel.** 18 mod. units. Cafe, Trailer Court, Ph. HU 3-4107.

**Southwest Photo Supply.** Western Kansas' most complete photo store.

**The Branding Iron.** Western clothing for the family. McKinley-Winter.

**Southwest Oil & Supply Co.** Good-year and Champion products.

**Lora Locke Hotel.** Family plan, pets allowed. Excellent Coffee Shop.

**SEE OLD DODGE CITY.** "Guided Tours" to all points of interest.

**Oneal Hotel.** Downtown, hospitable, air cond., available. Parking.

**Flamingo Motel.** 22 new (1957) units. Air cond., phones, radios, TV available.

**KINSLEY.** Three beautiful Parks with free facilities. On US 50-183-56. Half-way point between San Francisco, California, and Ocean City, Maryland — 1,561 miles.

**McLaughlin Oil Co.** Phillips '66' Service. Tourist info. On US 50.

**Taylor Motel.** Refrig., air cond., mod. Truck parking. Ph. 153.

**Hi-Way Drive-Inn-Cafe & Cateria.** Complete meals. Modern. 5 a.m.-11 p.m.

**MACKSVILLE.** Beautiful park, swimming pool with Band Shell and Shelter House built from natural stones from every state in the Union. Tables and barbecue pits for your accommodation. Good Cafes, service stations, schools and churches.

**Wegle Scooter Mower** — Ride as you mow. Fred A. Hopley, Excl. Distributor.



Famous Old Jail near Boot Hill, Dodge City.

**STAFFORD.** Quivira National Wild Life Refuge. Eight Churches, A-1 swimming pool, beautiful park, good streets, thrifty business district, well staffed 20-bed hospital, three doctors, library, farming, and fine schools.

**Curtis Cafe.** Home of tasty food. hrs. Expert mechanics and repairs.

**Ray Henry Real Estate.** Farms, Ranches, Loans and Insurance.

**Starlite Motel & Drive-In.** Mod., air cond., TV, soundproof, showers & tubs.

**HUTCHINSON.** Fourth largest city in Kansas. Center of state and nation. Grain elevators, with capacity of 35,000,000 bushels, grace the city skyline. Site of Kansas State Fair and National Junior College Basketball Tournament. World's longest grain elevator. Visitors welcome.

**Wheat Heart Inn Motel & Cafe.** 26 mod. air cond. units. Old ext. but mod. Newly decorated interior. W/TV.

**Sunset Motel & Eddie's Sunset Restaurant.** Air cond., delightful dining.

**Rambler Motel & Cafe.** Best Western, AAA. Serving the finest steaks, A. D. Rayl Motor Co., Inc. Ford Sales & Service. 109 W. 1st St.

**Central State Bank.** The drive-in bank with free bank-side parking.

**Kanch House.** 20 bks. N. on Hwy. King's Steaks, Kentucky fried chicken.

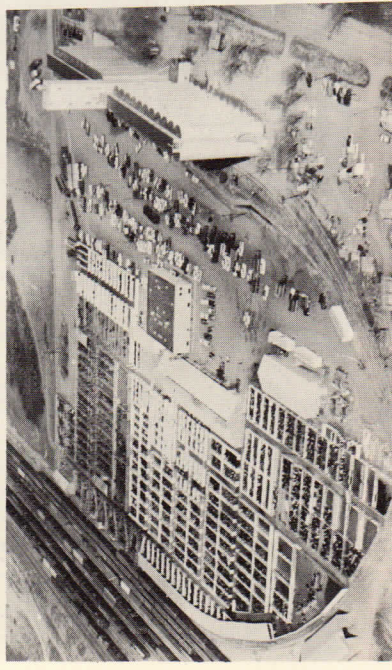
**Dillon's Food Markets.** Hutchinson, N. on Hwy. Dog & S. on Hwy.

**Newton Dodge & S. Co.** 17 rooms, air cond., tubs/showers, TV, radios, Cof. Shop.

**The Carey Salt Co.** Manufacturer of Salt Products for every purpose.



**NEWTON.** "Home of Rails and Trails" at end of Famous Chisholm Trail, Santa Fe Railroad. Mobile Homes Manufacturing area, wheat farming, milling. Bethel College with Kaufman Museum.

**Sharp's Mobile Homes, Inc.** American, Great Lakes, Airstream. Main Office: Newton. Other Kansas outlets: Junction City, Kansas City, Topeka, Colby, Great Bend, Wichita, Salina, Liberal & Pratt, Kansas City, Mo., Joplin, Mo., & St. Joseph, Mo.



McKinley Winter Stockyards — Dodge City.

**SALT MINES** 16 **HUTCHINSON** 19 **NEWTON** 7 **7** **9** **10** **25** **STRONG CITY** 21 **EMPORIA** 17 **14** **16** **8** **OTTAWA** **HOMERWOOD** **COTTONWOOD FALLS**

**Ripley Hotel.** Conveniently located downtown. Relaxed, delightful dining in the Ripley Coffee Shop or Golden Dining Room. Air con., family rates, TV, golf, swimming pool. Townsends, Newton's better store. Quality mdse. for the entire family. The Herald Book & Printing Co. Pens, gifts. Fine selec. greeting cards.

**Holstine Chevrolet.** AAA. Famous for the Best Trades anywhere.

**FLORENCE.** On the Cottonwood River. Kurtz 24 hr. Phillips '66' Service & Cafe. AAA, wrecker. Ph. TR 8-4574.

**STRONG CITY.** Knute Rockne Monument southward. Brown Derby Station & Cafe. Tasty food, courtesies, open 24 hrs. service. Flint Hills Motel. Modern, air cond., free TV. Immaculate, playground.

**EMPORIA.** "Halfway to Everywhere." Capital of Famous Bluestem Pasture. 4 million acres of beautiful rolling hill land. Home of the late William Allen White, Kansas State Teachers College and The College of Emporia.

**50-S Motel.** All mod., air cond., quiet. 1 mi. west on 30. Ph. 3622.

**The Citizens Nat'l Bank.** "It does make a difference where you bank."

**Crawford Oil Co.** Phillips '66' Kansas State Teacher's College. Teacher education since 1865. Visitors welcome at famous William Allen Broadview Coffee Shop. Fine food. Courtesies. Come as you are.

**Broadview Hotel.** Fireproof, mod., free parking. Families welcome.

**Ranch House Motel & Coffee Shop.** 52 units, air cond., TV.

**OTTAWA.** Built on site of Ottawa Indian Baptist Mission, established in 1837. Ottawa University. Four miles northeast is the Tany Jones Home, once an underground station for John Brown.

**Prairie Hills Motel.** Air cond., hot water heat. Tub/showers combination.

**OLATHE.** Cowboy Boot Capital of the Middle West. Location of Kansas State School for Deaf, Olathe Naval Air Station. George Burns' Drugs. Registered Pharmacist on duty. Open 8 a.m. to 10 p.m.

**US 50** is the scenic route across Missouri, avoiding trailer-truck traffic and revealing a peaceful, natural countryside, historic points, lovely little towns, and thoughtfully planned cities. The route skirts the Ozark Country.

**KANSAS CITY.** Famous for Beef, Swope Park, Cliff Drive. American Royal Livestock and Horse Show each October. Home of Kansas City Athletics.

**Holiday-Inn Motor Hotel.** 65th & E. 50. AAA, TV, Pool, Cafe, Cocktails. U-Smile Motel. AAA. Congress. US 50 at 58th St. Ph. WA 3-9300.

**RAYTOWN.** A fast growing city of beautiful new homes, shopping centers, churches of all faiths, and outstanding public and parochial school facilities. 30-minute drive from downtown Kansas City, Mo.

63rd Street Drive-In. Best Shows at its best.

Smith Bros. Ready Mix Concrete Co. Visitors welcome to our plant.

Justrite Super Market. One of finest, most complete markets on 50.

American Coach Co. Mfg. of one of most luxurious Mobile Homes. Midland Nat'l Bank. Visit Famous "Kaufman Museum." Nordstrom-Mack Motor Co. Ford Sales & Service 24 hr. road service. Guerdon Industries, Inc. Mfg. of Great Lakes Mobile Homes.

**FLORENCE.** On the Cottonwood River. Kurtz 24 hr. Phillips '66' Service & Cafe. AAA, wrecker. Ph. TR 8-4574.

**STRONG CITY.** Knute Rockne Monument southward. Brown Derby Station & Cafe. Tasty food, courtesies, open 24 hr. service. Flint Hills Motel. Modern, air cond., free TV. Immaculate, playground.

**EMPORIA.** "Halfway to Everywhere." Capital of Famous Bluestem Pasture. 4 million acres of beautiful rolling hill land. Home of the late William Allen White, Kansas State Teachers College and The College of Emporia.

**50-S Motel.** All mod., air cond., quiet. 1 mi. west on 30. Ph. 3622.

**The Citizens Nat'l Bank.** "It does make a difference where you bank."

**Crawford Oil Co.** Phillips '66' Kansas State Teacher's College. Teacher education since 1865. Visitors welcome at famous William Allen Broadview Coffee Shop. Fine food. Courtesies. Come as you are.

**Broadview Hotel.** Fireproof, mod., free parking. Families welcome.

**Ranch House Motel & Coffee Shop.** 52 units, air cond., TV.

**OTTAWA.** Built on site of Ottawa Indian Baptist Mission, established in 1837. Ottawa University. Four miles northeast is the Tany Jones Home, once an underground station for John Brown.

**Prairie Hills Motel.** Air cond., hot water heat. Tub/showers combination.

**OLATHE.** Cowboy Boot Capital of the Middle West. Location of Kansas State School for Deaf, Olathe Naval Air Station. George Burns' Drugs. Registered Pharmacist on duty. Open 8 a.m. to 10 p.m.

**US 50** is the scenic route across Missouri, avoiding trailer-truck traffic and revealing a peaceful, natural countryside, historic points, lovely little towns, and thoughtfully planned cities. The route skirts the Ozark Country.

**KANSAS CITY.** Famous for Beef, Swope Park, Cliff Drive. American Royal Livestock and Horse Show each October. Home of Kansas City Athletics.

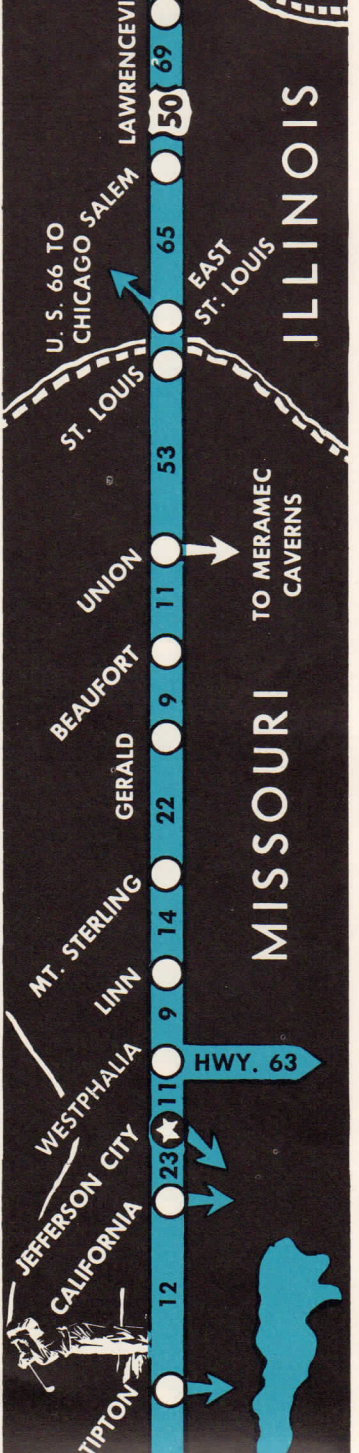
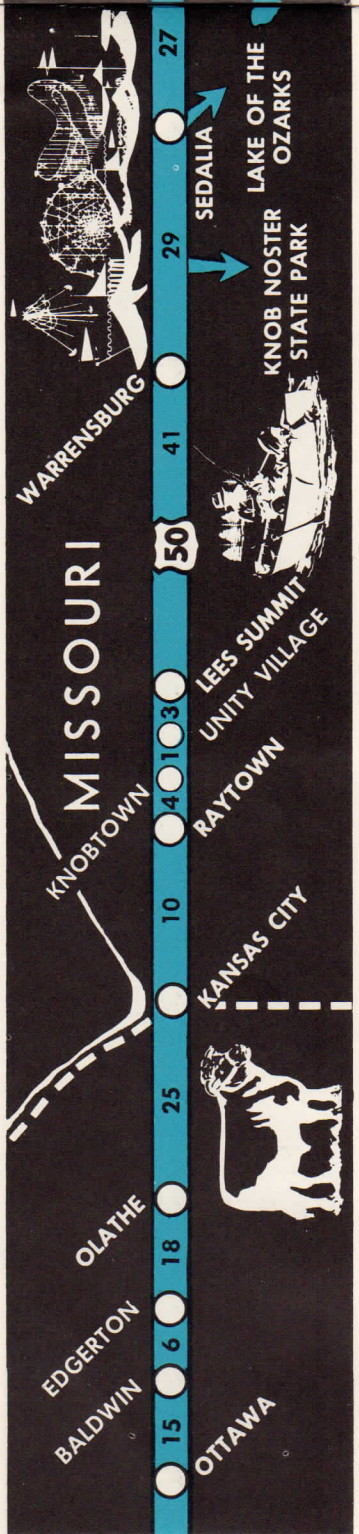
**Holiday-Inn Motor Hotel.** 65th & E. 50. AAA, TV, Pool, Cafe, Cocktails. U-Smile Motel. AAA. Congress. US 50 at 58th St. Ph. WA 3-9300.

**RAYTOWN.** A fast growing city of beautiful new homes, shopping centers, churches of all faiths, and outstanding public and parochial school facilities. 30-minute drive from downtown Kansas City, Mo.

63rd Street Drive-In. Best Shows at its best.

Smith Bros. Ready Mix Concrete Co. Visitors welcome to our plant.

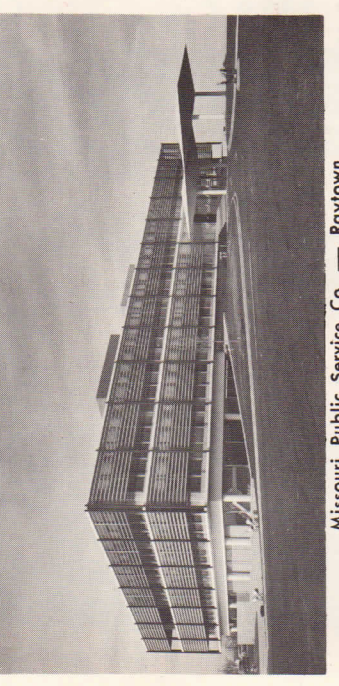
Justrite Super Market. One of finest, most complete markets on 50.



**KNOBTOWN.** The town named after a man who hung himself from a door knob. Blevens' Corner, Mobil products, Sporting Goods, Cafe, Liquor. Knobtown Standard Service. Atlas tires, batteries and accessories.

**UNITY VILLAGE.** World headquarters of the Unity movement, where Unity books and magazines are published. Visitors welcome. Unity Inn. A vegetarian Cafeteria serving visitors to Unity.

**LEE'S SUMMIT.** Home of the Younger Brothers. Stop and see Cole Younger's home and burial place. Beautiful Unity Farm, Lake Jacomo (over 900 acres of water). Fishing and picnicking. Gilbert's Conoco. Tires, batteries, etc. Grocs, cigarettes. Open Sundays. Stone Crest Cafe, 24 hrs., air serv. Tires, batteries and repairs. Prairie Ridge Motel. Air cond., TV, tub/showers comb. Compl. carpeted. Casteel's Service Station. Groceries and picnic supplies. Ph. Broadway 1-9835.



Missouri Public Service Co. — Raytown.

**WARRENSBURG.** Central Missouri State College, one of nation's finest small colleges. Missouri Pacific Railroad serves the city and country. Whiteman Air Base, 10 miles east.

Missouri Public Service Co. Serves area along Famous Fifty. Finley's Conoco Super Service. Goodrich Dealer. Open 24 hours.

**SEDALIA** Industrial-Trading center. Convention facilities. 41 churches, all faiths. Covered Wooden Bridge in active use, 2 miles south. Beautiful Missouri State Fair Grounds, Six City Parks, full facilities, open to public. Historical display, County Courthouse. Home of Scott Joplin.

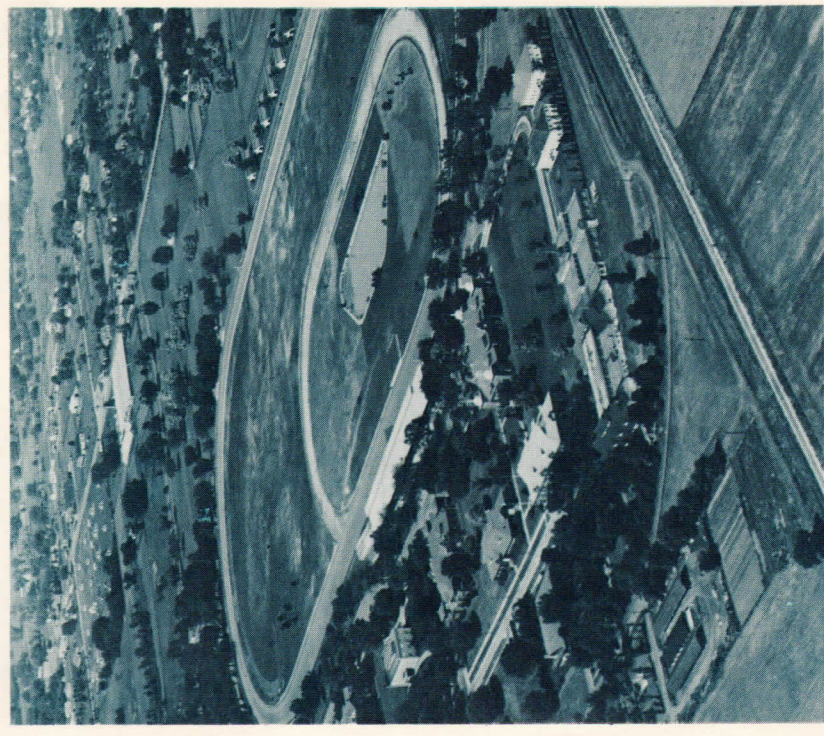
Missouri Public Service Co. Serves expanding area along Famous Fifty. El Rancho Motel. Radios, phones, TV, steam heat, family & com. rates. Third National Bank. 76 years of friendly banking service. Phillips '666' - 24 hrs. Cafe. Visit Sedalia's Crippled Children's Center. Radio Station KSL. Dial 1050 for news, weather, music for Missouri. Parkhurst Rental Co. Largest factory for nationwide rental trailers. Sedalia Motel. TV, pool, air cond., phones. West 50. Ph. TA 6-5600.

**TIPTON.** Just 30 minutes to Lake of the Ozarks. Tipton's Farmer's Bank. A good steam heat, air cond., TV. On 50. Bank in a good town.

**CALIFORNIA.** Unique for its twin business districts, beautiful parks, lake, Country Club, finest churches and schools. Industrial resources include unlimited water, electricity, natural gas, industrial park sites.

Goff Super Market. Air con., large parking area. Compl. picnic supplies. '66' Cafe. Air cond., Hwy. 50 W. Steaks, chicken, country ham, burgers. Mills Garage, Pontiac, GMC, AAA. Repairs on all. 24 hr. wrecker serv. Farmers & Traders Bank. Free parking for your convenience.

Burger's Ozark Country Cured Hams & Bacon. Hickory smoked, mailed anywhere. Fed. Insp. Delicious. California Motel. Finest, air cond., steam heat, mod. Insul. City limits. Heck Saddlery Co. Riding equipment. Suter's Woolen Mills. Fabric yardage sold at mill price.



Beautiful Missouri State Fairgrounds, Sedalia.

**JEFFERSON CITY.** Industrial and trading center. Site of many conventions. Museum on lobby floor of Capitol Building. Historical Society located across from the Governor's Mansion. Open daily. Chamber of Commerce office in Hotel Governor.

Warwick Village Motel. Air cond., TV, room phones, coffee shop. Adcock's Cafe & Brass Rail. Open 6 a.m.-2 a.m. daily for your conven. Finest. Willibrand's Tire & D-X Service at Westphalia. June. 50 & 63. New, used tires.

**LINN.** Entire town on US 50. George's Standard Service. Service by "George." Sporting goods. Ph. 356.

**MT. STERLING.** On the banks of the Gasconade River. Schaeperkoetter Store. Standard Service, car & truck. Goodyear products, wrecker, International Harvester.

Jefferson City and the State Capitol.



**ROSEBUD.** Founded 1901 when Rock Island Railroad was laid. Fire clay mining center of the world. Quarried clay shipped to Missouri processing plants for manufacture of fire bricks, miscellaneous. Building materials for world-wide distribution. Wehmer Motors & Cafe. Good food, homemade pies. Standard products. Ford Sales & Service. Open 6 a.m. to 8 p.m.

**GERALD.** The Lions Club welcomes you to a thriving community. Grannemann Bros. IGA Store. Shop at IGA. low prices every day. AAA, quality Oil Products. Phone 79. Donald Service Station. Clean rest rooms. Courteous, well located. The Citizen's Bank. A friendly bank in a community of friendly people.

**UNION.** Gateway to Meramec Caverns. Famous for its corn cob pipe industry. Crystal Ice & Fuel. Ice, Coal, Charcoal & ice cold watermelons. United Bank of Union. Your Country Bank. Loans, insurance services. Robert J. Purshcke Oil Co. Conoco Products.

**MERAMEC CAVERNS** near Stanton. World's only five-story cavern, Jesse James' hideout. Features Crystal Lake, Onyx Mountain, Jungle Room, Stage Curtain. Free parking for 10,000 cars.

**VINCENNES.** "Historically Old." Site of Old Fort Sackville, beautiful Clark Memorial and Bridge. Wm. Henry Harrison Mansion and old Northwest Territorial Hall. New Motel Vagabond at Wheatland. Air con., TV, showers, baths. Cafe near.

**WASHINGTON, IND.** Near North Fork of White River. Hinckle's Super Service, Sinclair & Deveyville Motor Court. Home Goodyear prods. 24 hrs. Ph. 325.

**Troy's Drive-In Restaurant.** Broasted chicken, steaks, chops. Open 24 hours.

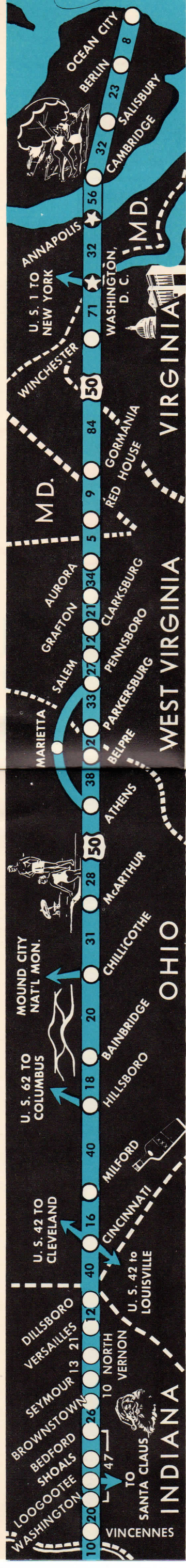
**LOOGOOTE.** Gateway to Santa Claus. Hindostan Falls nearby. Star Tavern & Restaurant. Air con., steaks, chicken, beer and wine. Wrecker serv., open 24 hrs. Ph. 417.

**SANTA CLAUS.** 100-year-old picturesque village and one of most fabulous Children's Parks in the world. Santa Claus attracts a million visitors each year. Has become known as real home of Santa Claus.

**SHOALS.** On White River. Gypsum Mines, Historic Hindostan Falls. Excellent fishing, swimming, boating. Courthouse, site of notorious Archer lynching.

Cecil's Gulf Service. Mod. One-Stop serv. Clean rest rooms. Jct. 50 & 150. Shoals Cafe. Cafeteria, open 24 hours. Gift Shop. At the caution light. St. Cinn Motel & Cafe at Mitchell. Mod., 12 mi. W. on 50. Ph. 2065-X Huron. L. Jones, Prop. Ed's. 12 mi. W. Bedford. Largest souvenir store. Baskets, jewelry and gifts.

**BEDFORD.** Spring Mills and Devil's Backbone. Leonard's Drive-In. Dinners, curb serv., fount. Open 7:30 a.m.-12 mid. Indiana's finest. B'fast, lunch, dinner. Meadow Lark Motel. Mod., air cond., TV, single/fam. units 3 1/2 mi. W. on 50.



**BROWNSTOWN.** Jackson County Forest. Heart of Melon Industry. Four Covered Bridges. Brownstown Loan & Trust Co. A Brownstown Hardware Co. Hdwe., appliances, sporting goods. Bank in heart of melon industry.

**SEYMOUR.** Swope Memorial Art Gallery. Seymour Motel. AMfIA, air cond., TV, Cafe. On 31, 2 miles N. of US 50.

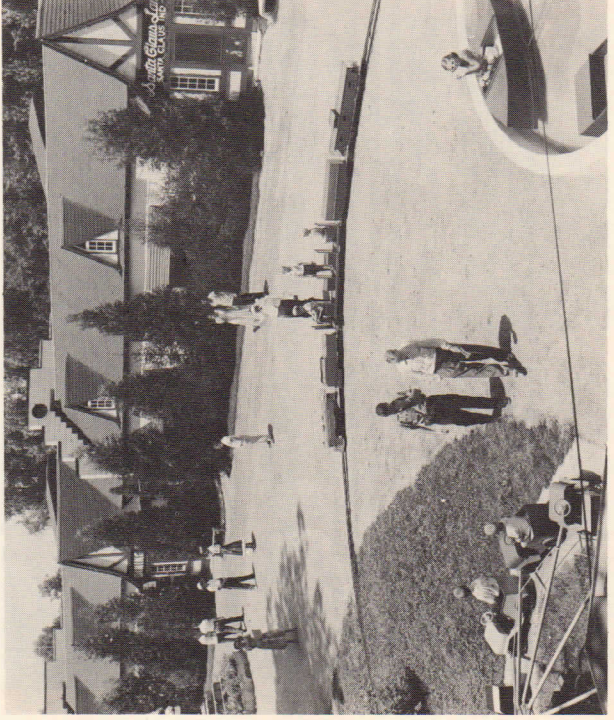
**VERSAILLES.** Scenic Laughery Valley in 6,000 acre Versailles State Park. W. M. Hunter & Son. Hardware, White Pine Restaurant. Chicken, sport goods, hunting & fishing lic. seatood, steaks, mod. Exp. Chef.

**DILLSBORO.** White Crane Mineral Water and Health Resort. Graver's Texaco Service. Goodyear, batteries, repairs, road service. Phone 166.

**HILLSBORO, OHIO.**

**ROCKY FORK LAKE.** A beautiful lake with thirty-five miles of natural wooded shoreline. 2,332 surface acres of clear, clean water with an average depth of 25 ft. Well stocked with Muskies over 20 lbs., and Channel Cat up to 10 lbs. Loads of pan fish. Boats and motors for rent or sale. Picnic and camping areas, bathing beaches, boating, restaurants, dairy products, cabins, boat storage, souvenirs, Beech ware, gas stations, trailer court, bait and tackle. Lots for sale. Nearby points of interest. 6 to 10 miles east of Hillsboro. 1 mile south of U. S. Highway 50. Sponsored by the Rocky Fork Lake Assn., Inc.

**THE "7" CAVES.** One of America's most beautiful scenic parks. Seven artistically illuminated caverns and precipitous cliffs of the famed Rocky Fork Gorge with connecting canyons, rapids and waterfalls.



Children's Playground at Santa Claus, Indiana.

**BAINBRIDGE.** Founded in 1805 by Gen. Nathaniel Massie. First dental school in the U. S. Building is now Museum. Scenic Paint Valley Skyline Drives. Indian Mounds built by ancient Hopewell civilization. Near State Parks, forests and recreation facilities. Hedrick Rexall Drug. Fountain, film, prescriptions, travel needs.

**CHILLICOTHE.** Center of scenic George Washington Highway, rich in Ohio tradition. Mound City, burial ground of prehistoric Indians; spacious historical homes, Adena, Veterans Hospital, Federal Reformatory, industries. Manufacturing of fine papers, shoes, aluminum cooking utensils. Mammoth Atomic Energy Plant south of city. M. Schachne & Sons. Esab. 1887. Brewer & Brewer Sons Inc. "Better roads with Asphalt." Contractors since 1888. One of Ohio's fine Dept. Stores.

Ashland Truck Stop & Cafe. Treat you right day and night. Junction 35 & 50.

**MCAETHUR.** In the heart of southeastern Ohio's recreational wonderland. Nearby beautiful Lake Hope State Park. Boating, bathing, fishing. Bethel's Sohio Service. AAA, Standard Products, Atlas Tires and Batteries.

**ATHENS.** Is an educational and commercial center for Southeast Ohio. Here is Ohio University with almost 7,000 students, the Athens State Hospital, and several regional and district offices of State and Federal agencies.

The Cline Pharmacy Co. The Prescription Store of Athens. Bob Hess Inc. Chevrolet and Oldsmobile Sales and Service.

**BELPRE.** "Beautiful Prairie," founded in 1789 by Revolutionary veterans, overlooks Blennerhassett Island, where Aaron Burr plotted an empire. Site of "Underground Railway" used in slave days. Famous apple belt and farming. First woman teacher, subscription library and organized church. Belpre Rexall Drug. Films, gifts, fountain, prescriptions, travel needs. Bel-Rock Motel. 10 mod. air cond. units. TV. On beautiful Ohio River. Thoma Bros. 24 hr. Sohio Service. Standard Oil, AAA. Since 1936.

**MARIETTA (U. S. 50 Alt.).** Ohio's Oldest City. Center of the Ohio Valley Industrial Development. Famous Rufus Putnam Home, Marius Museum. Golf, boating, swimming, fishing. Hotel Lafayette. On the banks of the Ohio River. Famous for luxurious accommodations. The Gun Room for better food and service. Free parking for 200 cars. Motel Reno. Modern, quiet, AAA, TV, steam heat. Air conditioning.

**SALEM, W. VA.** Settled in 1792. Farming, hardwood timber, gas, oil and hand-made glass. State Industrial Home for Girls and Salem College. First government-approved watershed development. Kiwanis and Lions Service Clubs.

Salem College. Founded 1888 by Seventh Day Baptists. 4 years. Co-Educational.

**CLARKSBURG.** Historically famous. Centrally located for pleasure and industry. Highly appreciated for "Good Living." Mountains and people are outstanding assets. The James & Law Co. Books and stationery. Gift Shop, photo supplies.

**WINCHESTER.** Oldest English speaking community west of Blue Ridge Mountains, founded 1744. Here George Washington started career as soldier, surveyor, statesman. City captured and recaptured more than 70 times during Civil War. Apple Capital. Festival each year April 1 - May 2, 1959. April 28-29, 1960. Famous Shenandoah Valley begins in Virginia.

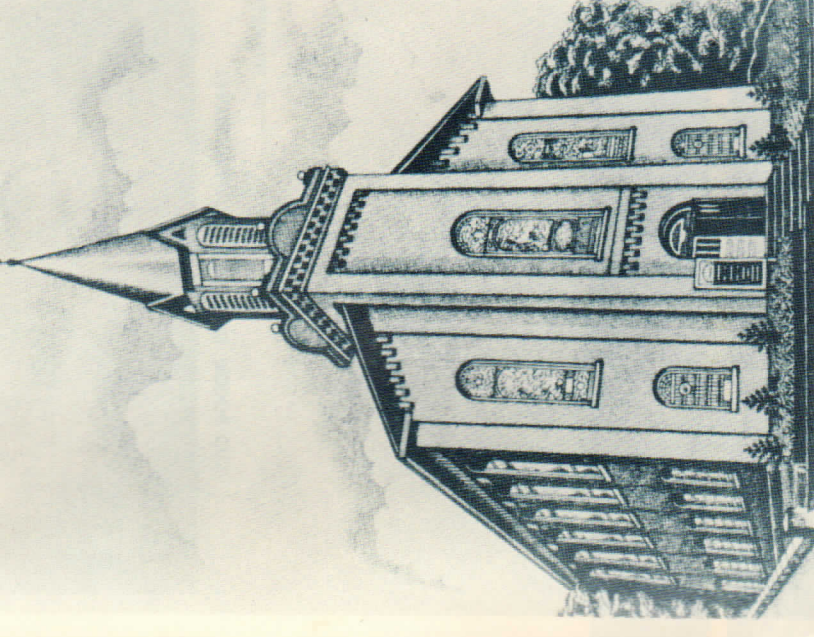
Skyline Caverns. Front Royal, 20 mi. South Annapolis (Cave Flowers). Elms Motel & Dining Room. AAA superior, courts, Duncan Hines, rooms, phones, TV and air cond. Lee Jackson Restaurant-Motel & Service Station. Junction 50 & 522. Good place to eat and sleep.

**WASHINGTON, D. C.** On Potomac River. U. S. Capitol, Washington Monument, Lincoln Memorial, Jefferson Memorial, Smithsonian Institution, etc.

**SALESBURY.** Largest City on Eastern Shore of Maryland. With large plants of Wayne Pump Co., Manhattan Shirts, Chris-Craft Corp., and other nationally known firms. Fine churches, schools, beautiful city park, two golf courses, State Teachers College, all kinds of recreation.

**BERLIN.** Birthplace of early Naval Hero, Stephen Decatur. Many historic homes, Ocean Downs Raceway. Center of large broiler chicken industry. Ideal spot for industrial expansion.

Andrews Methodist Church, Grafton, W. Va. "Mother Church of Mother's Day."



**OCEAN CITY (Where US 50 Begins).** Maryland's only seaside resort. Few hours to New York, Philadelphia, Washington, Baltimore, and Wilmington, Delaware. Unexcelled beaches and facilities. Modern hotels, motels, cottages, apartments, trailer parks, restaurants, stores and night clubs. Boardwalk promenade. Golf course. Many game fish.

Surf & Sands Motel. Ocean front, private porches, pool, Coffee Shop, Lounge open all year. Maridel Motel & Cottages. Trailer space, on beach, waterfront. Ph. Atlantic 97665. Fireproof. Atlantic 97192.

Dales Esso Center. AAA, Lub., Atlas prods., wrecker. AT 9-6113. Stow A Way Motel. Finest, ultra mod., Cafe, swimming, cocktails. Pines Motel. Heated. Open year-round. On US 50, 3/4 mi from beach.

Adelphia Apartments, Baltimore Ave. Rent, week, month, season. Mrs. Frank Sacco.



Ocean City Beach and Boardwalk.

**NATIONAL U. S. 50 FEDERATION**

President  
GEORGE CANON  
Box 258  
Al Tahoe, California

Second Vice President  
BILL KRAMER  
85 W. Main Street  
Chillicothe, Ohio

Secretary-Treasurer:  
R. ROY TAYLOR  
100th Meridian Motel  
Gunnison, Colorado

PROJECTS OFFICE: BOX 688, ELY, NEVADA